

INTRODUCTION

The Omnivex Moxie Administrator training program is an advanced level course for all individuals looking to use, install & support Omnivex products. Students will learn how to install and maintain the common components of a successful Moxie installation. This two-day course uses a variety of practical exercises to teach participants software installation, configuration and product support.

(This course is available in both [instructor-led](#) and [eLearning](#).)

COURSE OVERVIEW

Moxie Administrator Training is a 2-day course designed for users that will be tasked with the ongoing welfare of the Moxie environment. The syllabus covers installation and configuration of Moxie Data Server, Moxie Studio & Moxie Player. Also included are lessons on our most popular products for bringing data into the digital signage system from real world sources, such as XML, SQL, Microsoft Exchange calendars and hardware devices.

PREREQUISITES

This course is aimed at members of an internal IT helpdesk team. Participants attending this course must have competency working with Microsoft Windows and have an awareness of services, databases and TCP/IP networking. Moxie Designer training is a prerequisite for users wishing to take Moxie Administrator training.

PROGRAM SYLLABUS

Introduction to Moxie Administrator Training

An introduction to the course and how the training relates to other offerings. Defines the usual tasks carried out by a Moxie Administrator.

Installing and configuring Moxie Data Server

How to install and configure Moxie Data Server

How Moxie licensing works

An in-depth lesson on how licenses are distributed from the Moxie Data Server to client applications.

Installing Moxie Studio

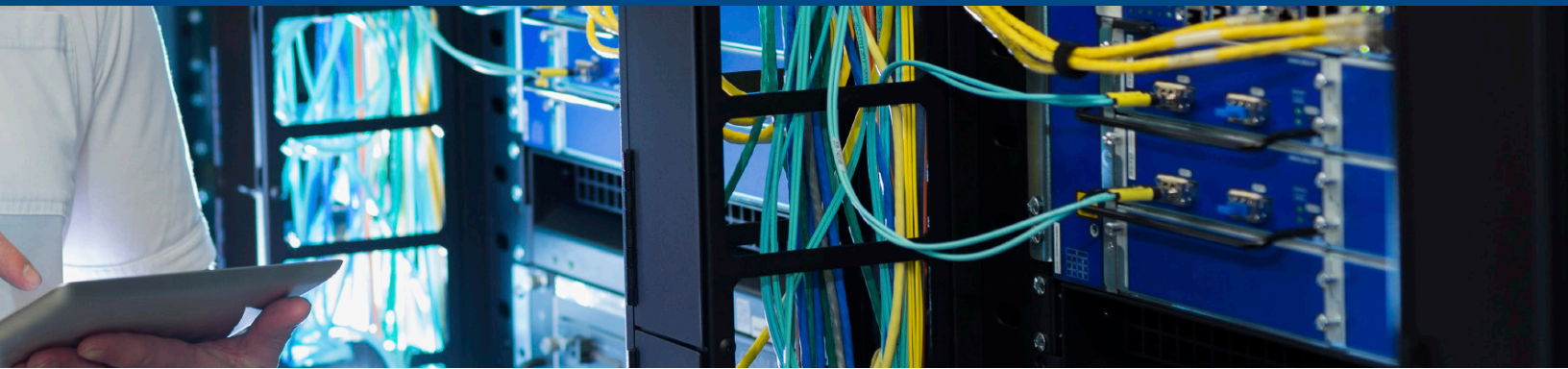
Installation and configuration of Moxie Studio

Installing Moxie Player

Installation and configuration of Moxie Player

Configuring Permissions

Configuration of Moxie Permissions, administration of permissions



Introduction to Moxie cache folder

An in-depth lesson on how files are housed and distributed around a Moxie network

Understanding program and exception logs

How to leverage Moxie exception logs and Windows Event Viewer when troubleshooting problems

Understanding Moxie playback synchronization

An in-depth lesson on how TCP/IP communications work when playback is synchronized across multiple players

Introduction to Omnivex Data Suite & Moxie Back Office

An overview of the common linking products known as the Data Suite.

Installing and configuring DataPipe 3 Server

Installation, licensing, configuration and backup of DataPipe Server

Installing and configuring DataPipe 3 Client

Installation, configuration and backup of DataPipe Client

Installing and configuring XMLLink 3

Installation, licensing, configuration and backup of XMLLink

Installing and configuring SQLLink 4

Installation, licensing, configuration and backup of SQLLink

Installing and configuring CalendarLink 3

Installation, licensing, configuration and backup of CalendarLink

Installing and configuring IOLink 3

Installation, licensing, configuration and backup of IOLink

Understanding Moxie network backups

How to backup and restore Moxie specific products.

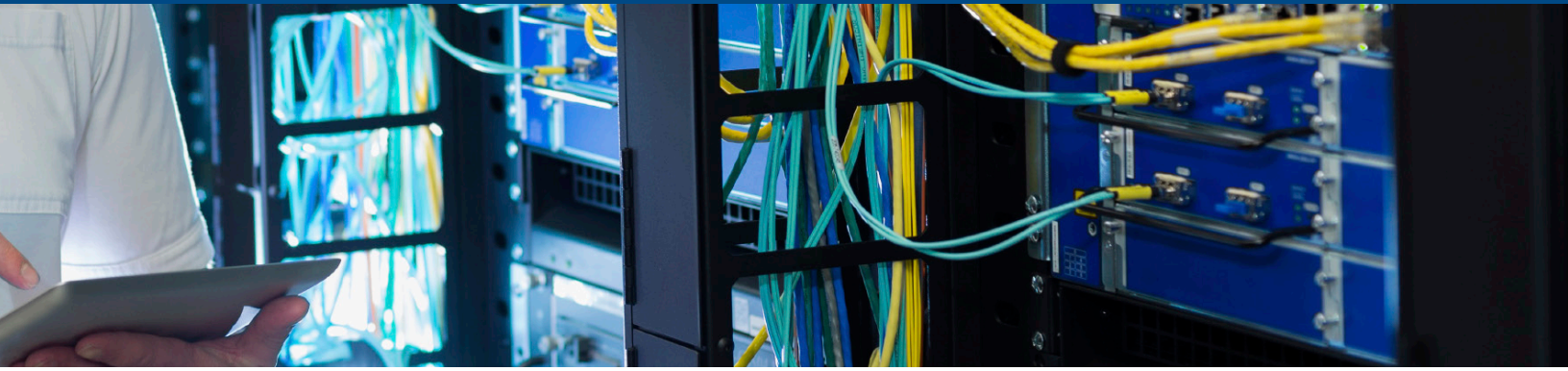
60 minute learning assessment

30 questions to assess your knowledge of Moxie Designer and to allow room for additional training for any misunderstood concepts.

TRAINING ENVIRONMENT REQUIREMENTS

Each participant must supply their own computer. Participants must have an Administrator-level User Account on their laptop computer in order to install the necessary applications & services for the training.

Each participant must supply their own computer. Participants must have an Administrator-level User Account on their laptop computer in order to install the necessary applications & services for the training.



Our recommended specifications are:

- Operating system: Microsoft Windows 7/8 Professional
- Free hard-disk space: 10 GB
- Processor: Dual-core 3.0 GHz
- Memory: 2 GB
- Video card: AMD Radeon or FireMV, or nVidia GeForce or Quadro, or Matrox QID/M-series card

Specifications lower than those listed may run the software but it will impact the pacing of the course and the responsiveness of the applications. The trainer and the participants must be able to connect to a network for communication via TCP/IP. A standalone network with a dedicated DHCP server instead of a production network is acceptable. An internet connection is preferred but not mandatory.

CONCLUSION OF THE COURSE

When the course is completed, participants will have the knowledge required to install, maintain and support a Moxie digital signage installation.